

MONTHLY MEMBERSHIP PROGRESS REPORT

LOCATION INDIA

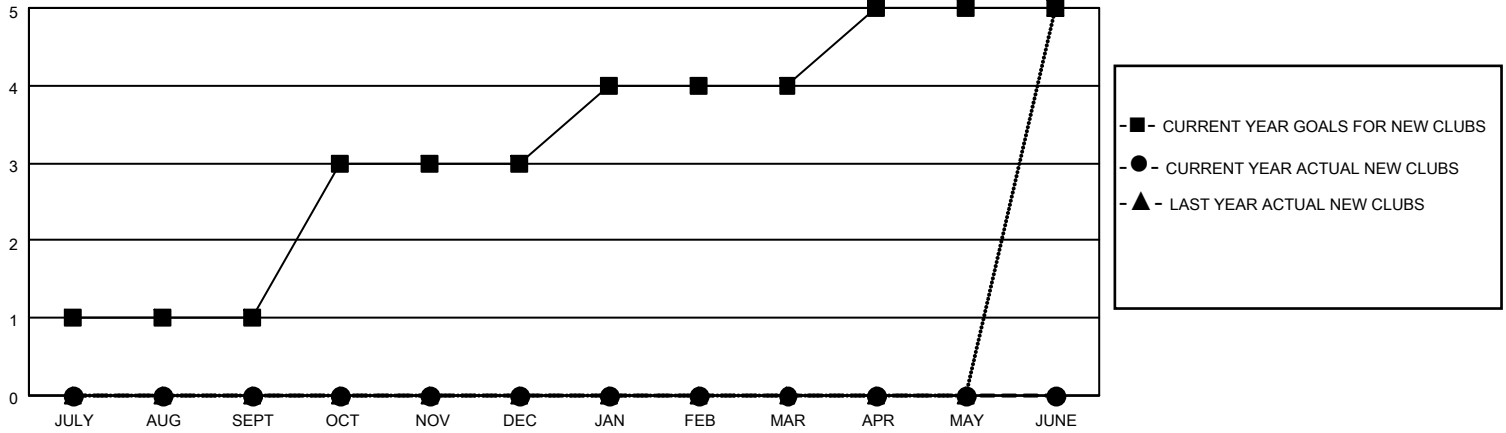
District 3231A1

Results as of: 6/30/2023

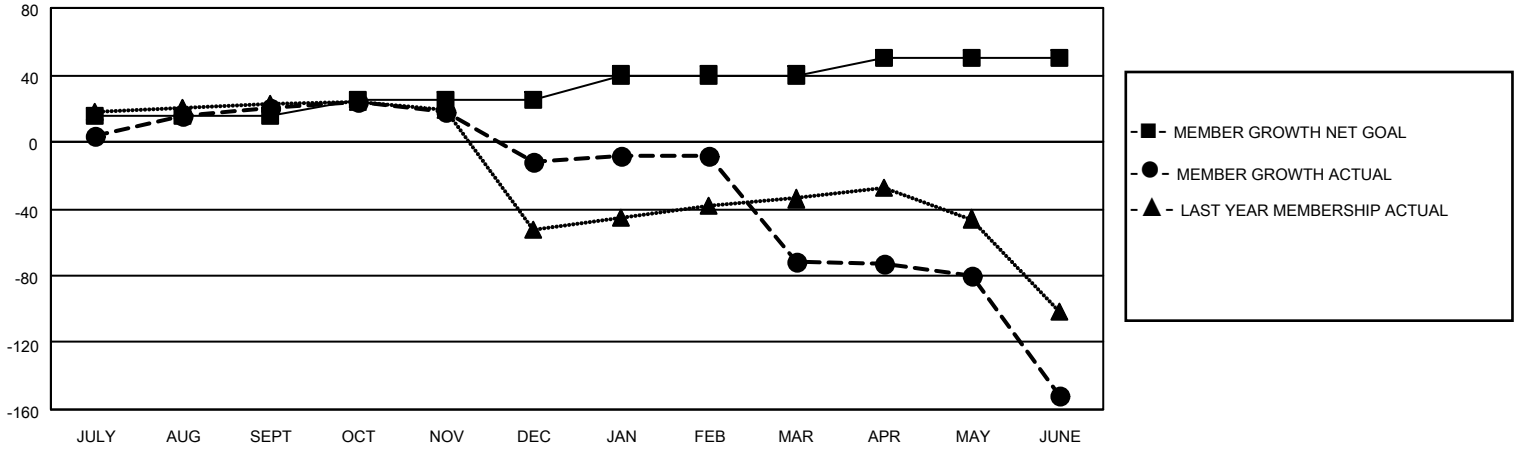
Clubs			
RESULTS FOR 2022-2023			
QUARTER	NEW CLUB GOAL	NEW CLUBS	DROPPED CLUBS
JULY/AUG/SEPT	1	0	0
OCT/NOV/DEC	2	0	0
JAN/FEB/MAR	1	0	29
APR/MAY/JUNE	1	0	1

Members			
RESULTS FOR 2022-2023			
QUARTER	MEMBER GROWTH NET GOAL	MEMBER GROWTH ACTUAL	DROPPED MEMBERS ACTUAL (including transfers)
JULY/AUG/SEPT	15	46	18
OCT/NOV/DEC	10	14	42
JAN/FEB/MAR	15	18	73
APR/MAY/JUNE	10	22	97

GOALS AND ACTUAL NEW CLUBS CUMULATIVE



GOALS AND ACTUAL MEMBERS CUMULATIVE



DROPPED CLUBS: 30

20 CLUBS OF 74 ADDED 1 OR MORE NEW MEMBERS

GENDER DISTRIBUTION

MALE	816 (61.35%)
FEMALE	514 (38.65%)
NON BINARY	0 (0.00%)
PREFER NOT TO ANSWER	0 (0.00%)

DROPPED MEMBERS

[CLICK HERE FOR CUMULATIVE MEMBERSHIP DATA](#)

DECEASED	23
CLUB CANCELLED	74
OTHER	133
TOTAL	230

TOTAL FAMILY UNIT MEMBERS	586
FAMILY MEMBERS PAYING HALF DUES	312